

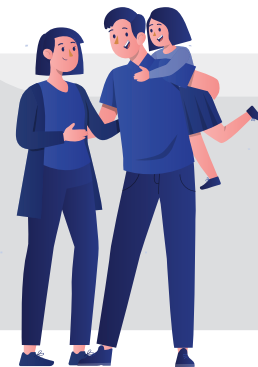


Funded by  
UK Government



## Returning to Jamaica

### Information Leaflet - English



## WHAT ASSISTANCE IS PROVIDED?

### Pre-Departure Information:

- Returning individuals can contact IRARA to discuss reintegration options in Jamaica.

### Short-Term Assistance:

- Airport Reception (upon request).
- Accommodation for up to five nights.
- Transportation to an address in-country.
- Care & food provision packs.
- Small cash assistance for immediate needs.

### Medium-Term Assistance:

- Assistance with finding and reuniting with family.
- Support with in-country documentation.
- Signposting to local services.
- Mental wellbeing and counselling (if required).

### Long-Term Assistance:

Access to a Returnee Education and Entrepreneurship Fund for:

- Support with accessing the local job market.
- Support with setting up a business.
- Support with accessing vocational training or further education.
- Assistance with legal migration opportunities.

### Who can get support?

If you are a Jamaican national who has returned, or will be returned from the United Kingdom, IRARA can help you rebuild your life in Jamaica. This support is available for up to 12 months following your return to Jamaica.



### How to access support?

If you are currently in the UK, contact the UK IRARA office using the details below.

If you have already returned to Jamaica, please contact the IRARA office in Kingston using the details below.

### About the Programme:

The Home Office Returns Reintegration Programme assists the return and reintegration of people in the United Kingdom with no legal status or right to remain.

The programme offers a wide range of services, providing assistance on arrival and longer-term support for persons returning to Jamaica.

### About IRARA:

IRARA delivers reintegration services throughout Jamaica, backed by global experience supporting thousands of individuals in rebuilding their lives across numerous countries. Experienced counsellors provide personalised guidance and support, ensuring each reintegration journey is sustainable and tailored to the individual's unique needs.

### Contact information in Jamaica:

-  **Address:** IRARA, The Business District Limited, 22B Old Hope Road, 19 Cargill Avenue, Kingston, Jamaica
-  **Email:** [reintegration@irara.org](mailto:reintegration@irara.org)
-  **Tel:** +1 876 203 3525
-  **Opening Hours:** 9am - 5pm Mon - Fri
-  **IRARA in the UK Office Hours:** 8:30am - 5pm Monday - Friday
-  **Tel:** +44 (0)1433 627 247
-  **Email:** [reintegration@irara.org](mailto:reintegration@irara.org)



SCAN ME



V2

[www.irara.org](http://www.irara.org)